



# Gwinnett County Public Schools 2009-10 Testing Calendar Update

## CRCT Testing Dates Change for Grades 1–8

*Gwinnett County Public Schools (GCPS) combines a rigorous curriculum, exceptional teaching, and reliable testing to form a comprehensive instructional program. Spring is generally the time when schools assess students' knowledge of the curriculum. Georgia's Criterion-Referenced Competency Tests (CRCT) are one tool used to measure student learning. These tests are taken in mid- to late-April. In response to a recommendation to benefit students, Gwinnett elementary and middle school CRCT testing dates are changing from dates originally shared with parents.*

### New Testing Dates for CRCT:

April 14–16, 2010: Georgia's Criterion-Referenced Competency Tests (CRCT) for Grades 1 and 2  
(These students were originally scheduled to take the CRCT April 20–22.)

April 19–23, 2010: Georgia's Criterion-Referenced Competency Tests (CRCT) for Grades 3–8  
(These students were originally scheduled to take the CRCT April 13–19.)

Are there state guidelines on when students should take the CRCT?

School districts have a 4- to 5-week state testing window in which students must take these required state tests. In the past, Gwinnett has administered the CRCT on nine consecutive days, beginning on the Tuesday following Spring Break. GCPS has administered the CRCT to students in grades 1 and 2 on three consecutive days and to students in grades 3–8 on five consecutive days without overlap of days. In addition, the district has provided several make-up days to allow absent students to complete the CRCT.



Gwinnett County Public Schools  
437 Old Peachtree Road, NW  
Suwanee, GA 30024-2978  
[www.gwinnett.k12.ga.us](http://www.gwinnett.k12.ga.us)

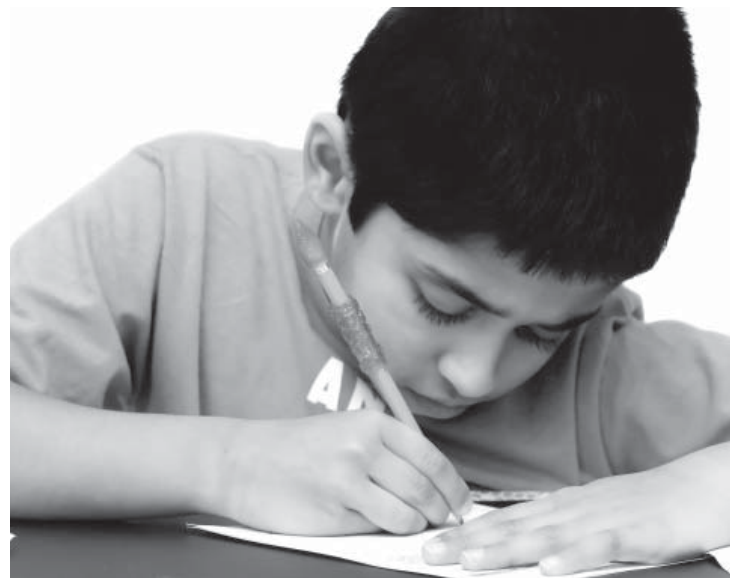
Why is the district changing the CRCT testing dates?

Feedback from teachers and parents led the district to study a recommendation that would shift the CRCT testing dates in Gwinnett schools. In the past, CRCT testing for upper grades began immediately after Spring Break. The shift will give students and teachers more time to return to the regular school routine before testing. The district convened a focus group of principals to consider the recommendation. In addition, elementary and middle school testing coordinators were involved in the discussion, sharing their thoughts on how a change might have a positive impact on student achievement.

What are the benefits to making this change?

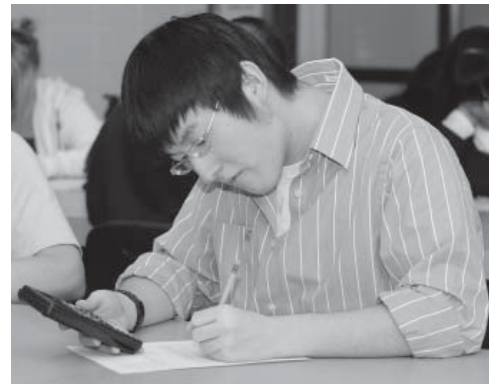
The school system's decision to shift its CRCT testing calendar has several benefits:

- This shift allows for better use of the state testing window.
- The new schedule provides more time for students in grades 3–8 to adjust to returning to school following Spring Break before testing begins. This extra time is important as students in grades 3, 4, 5, 7, and 8 must meet state standards on the CRCT in order to earn promotion to the next grade level.
- The new schedule should allow ample time for the state to return CRCT results to Gwinnett schools prior to summer break.



# 2009–10 TESTING CALENDAR

**Regular attendance has a direct influence on student achievement.** That's why it is important that students be in school every day, and especially on test days. Attendance on test days gives students an opportunity to show what they know, providing teachers with important information about each student's learning. Below is a list of dates when Gwinnett students will take national, state, and system assessments during the 2009–10 school year. While these days have been set aside for test administration, it is important to remember that only a small amount of time— ranging from as little as one hour up to two hours— is actually spent testing on a given day. Please use this for reference when planning appointments or time away from school.



## ELEMENTARY SCHOOL TESTING DATES

Sept. 21–25, 2009	Cognitive Abilities Test (CogAT)	Grades 1, 3, and 5
Oct. 19–28, 2009	Iowa Tests of Basic Skills (ITBS)	Grades 3 and 5
Jan. 19–March 1, 2010	ACCESS for ELLs Test Administration Window	English Language Learners
March 3, 2010	Georgia Writing Assessment	Grade 5
March 15–26, 2010	Georgia Writing Evaluation Window	Grade 3
March 17, 2010	Gateway Mathematics Reasoning Test (open-ended)	Grade 4
*April 14–16, 2010	Georgia Criterion-Referenced Competency Tests (CRCT)	Grades 1 and 2
*April 19–23, 2010	Georgia Criterion-Referenced Competency Tests (CRCT)	Grades 3–5

## MIDDLE SCHOOL TESTING DATES

Sept. 21–25, 2009	Cognitive Abilities Test (CogAT)	Grade 8
Oct. 19–28, 2009	Iowa Tests of Basic Skills (ITBS)	Grade 8
Jan. 19–March 1, 2010	ACCESS for ELLs Test Administration Window	English Language Learners
Jan. 20, 2010	Georgia Writing Assessment	Grade 8
March 17, 2010	Gateway Mathematics Reasoning Test (open-ended)	Grade 7
*April 19–23, 2010	Georgia Criterion-Referenced Competency Tests (CRCT)	Grades 6–8
May 12, 2010	Georgia End of Course Test (Accelerated Integrated Algebra I only)	Grade 8
<i>*These testing dates were shifted to avoid testing immediately after spring break.</i>		

## HIGH SCHOOL TESTING DATES

Sept. 30, 2009	Georgia High School Writing Test	Grade 11
Oct. 14, 2009	PSAT (no charge for grade 10, fee for grade 11)	Grade 10 Grade 11 optional
Dec. 16–18, 2009	Georgia End of Course Test Window, designated courses Specific test dates for designated courses to be determined.	Grades 9–12
Dec. 16–18, 2009	Final Exams	Grades 9–12
Jan. 19–March 1, 2010	ACCESS for ELLs Test Administration Window	English Language Learners
March 22–25, 2010	Georgia High School Graduation Tests (Language Arts, Mathematics, Science, and Social Studies subtests)	Grade 11
April 20 and 22, 2010	High School Gateway (Science/Language Arts and Social Studies/Language Arts)	Grade 10
May 3–14, 2010	Advanced Placement (AP) Exams	AP students
May 10–21, 2010	Georgia End of Course Test Window, designated courses Specific test dates for designated courses to be determined.	Grades 9–12
May 24–26, 2010	Final Exams	Grades 9–12

Note: High schools on block schedule or mini-semester will have an additional testing window for End of Course Tests and Final Exams in October and March. Contact your local school with questions.

