

# The Comet Connection

A newsletter for the families of W. C. Britt

Volume I, Issue VI

March, 2010

## Inside This Issue...

Looking Ahead in March & April	2
Staff Awards for February	2
What Is My Child Learning in March?	3
Attendance Law, Policies, and Procedures	4
Helpful Math Web Site	5
Coaches' Corner Science	6
When Are the Next Parent Workshops?	7
Snellville Day's Float	7
South Gwinnett Cluster Foundation Dinner/Auction	8
Cafeteria News	9
PTA Spring Carnival	9
PTA Officers	10
Britt's Reader's Rally Team Results	10
SGHS Chorus Performs for Britt Students	10

## Principal's Corner

March 1, 2010

Greetings to the W. C. Britt Elementary School Community!

I want to thank you for your support and for all your work to make sure your child is achieving to their greatest potential. Teachers are diligently providing students engaging instruction of the Academic Knowledge and Skills (AKS) for academic success. With only four weeks of school until the CRCT state assessment, we are working collaboratively to identify curriculum strands to be reviewed and enriched. We need your help. Please make sure your child is in attendance each day of school if at all possible. Make sure students get the proper amount of sleep and begin the day with a good breakfast. Most importantly, motivate your child to do their very best. I hope you will celebrate their accomplishments at school and assist them with setting academic goals. Perhaps the refrigerator door would be a place you can showcase your child's good work sent home by your child's teacher. Time spent helping your child become a good student motivated to learn will pay great dividends for future learning opportunities.

The Britt Great Poetry Race is on! I must say that I have taken great pleasure in listening to students read their poems, and I have signed their documentation sheets proudly. Our Britt Comets are beaming with pride with their accomplishment. Research has shown that reading poetry increases a child's reading fluency and fuels motivation. To increase the rigor of this learning opportunity, I challenge you to encourage your child to memorize the poems for their grade level. I believe this will provide even greater opportunities to celebrate academic accomplishments. I want to again thank the South Gwinnett Cluster Foundation for providing the funds to reward students with a very nice W. C. Britt Reader baseball hat. I look forward to students wearing these hats to school with pride on designated days and also earning pins for additional reading awards in the future to place on their hats. Your support in encouraging students to improve their reading skills is greatly appreciated.

As a result of the redistricting for Britt Elementary, several of our dear Britt families will attend Norton Elementary School beginning in August 2010. We will greatly miss these students and their families, but we know they will be attending another excellent Gwinnett County Public School. Dr. Daundria Phillips, Principal of Norton Elementary, will be coming to Britt Elementary at 7:00 pm on May 11 to speak with parents of students who will be making the transition to Norton Elementary. Mark your calendar for this event. I am sure you will enjoy meeting with Dr. Phillips.

We have wonderful students at Britt Elementary. I believe they are the best. One example of our award winning students is the Britt Divisional Readers Rally Champs led by Carol Ann Chapman. Read more about this wonderful team on the following pages. Again, I want to thank you for choosing Britt Elementary and for the support you give our school.

With warmest regards,

Doris Jones

## Looking Ahead in March:

- March 3 Fifth Grade Writing Test
- March 4 Pizza Hut Night
- March 4 Fourth Nine Weeks AKS Workshop, 7 pm
- March 9 Zaxby's Snellville Family Night 5-8 pm
- March 11 End of the 3rd Nine Weeks
- March 12 Student Holiday
- March 15 School is in session (Make-up day for 9/22/09)
- March 16-25 Evaluation Period for Third Grade Writing Assessment
- March 18 Steak 'N Shake Night
- March 29 PTA Board Meeting
- March 30 Picture Day
- March 30 *Getting Ready for Kindergarten*, 6:15 pm (Pre-K Parent Workshop)
- March 30 *Family Literacy Night with Eric Litwin*, 7 pm

## Looking Ahead in April:

- April 1 Pizza Hut Night
- April 2 Student & Teacher Holiday
- April 5-9 Spring Break
- April 13 Zaxby's Snellville Family Night 5-8 pm
- April 14-16 CRCT for Grades 1 & 2
- April 19-23 CRCT for Grades 3-5
- April 29 Area IV Board Mtg. @ Shiloh HS 7 pm
- April 30 Slipper Day *Relay for Life* \$1.00 donation

## FEBRUARY AWARDS Congratulations!



**CAMILLE WARREN,**  
**Shining Comet**

**\*Nice**

**\*Cheerful**

**\*Supportive**

**\*Considerate**

**\*Hard-working**

Camille is always willing to help & ready to do whatever she can to make the day run smoothly. She is friendly and very sweet!



**AMY JENNY,**  
**Technology Teacher  
of the Month**

Ms. Jenny uses technology to make her lessons exciting & engaging. She is always thinking outside the box & comes up with terrific ideas to integrate technology & the Kindergarten curriculum. She explores & shares new websites that she has found that correlate with the Kindergarten AKS. Ms. Jenny uses the ladybug to display work samples, the Mimio Bar during whole group instruction, & the digital camera to take pictures of her students. Ms. Jenny continues to look for tools that will make her lessons exciting & engaging.



**KELLY KUCHEK,**  
**Instructor of  
the Month**

Ms. Kuchek is always ready to help any staff member. She is very knowledgeable in all aspects of technology. She delivers staff development in a way that makes everyone feel comfortable. When one walks out of a staff development session, one feels empowered to practice the new skills in the classroom. She is always ready to lend a hand, answer questions, or provide motivational support to the faculty & staff..

**Kindergarten AKS**

**LA**-Identify rhyming & non-rhyming words; apply phonics to read words & sentences; read 50 high frequency words, color words, & number words.

**Writing**-Explore prewriting, drafting, revising, editing, & publishing; state an opinion & support it.

**MATH**-Recognize equivalence  
Ex.  $4+1=3+2$ ; make fair trades with pennies & nickels, or pennies & dimes.

**SCIENCE**-Compare & contrast groups of organisms; classify living things as plants or animals; compare common needs between a plant & animal; explain the similarities & differences in plants; match pictures of animal parents & their offspring, & explain reasoning for the match.

**SOCIAL STUDIES**-Identify the purpose of national holidays & describe the people or events celebrated; identify important American symbols & explain their meaning.

**First Grade AKS**

**LA**-Recognize plot, setting, & characters; identify the comma & quotation marks; read with accuracy, speed, & expression; identify common 200 sight words; use spelling & knowledge of word families.

**Writing**-Spell 100 high-frequency words correctly; write in a variety of genres; write appropriate length story or text.

**MATH**-Use addition facts to 18; compare length, weight, & capacity; measure using an inch and centimeter ruler; use number sense, identify number patterns, round numbers to the nearest 10 and 100, learn place value concepts; add & subtract two digit numbers.

**SCIENCE**-Study the properties of magnets.

**SOCIAL STUDIES**-Discuss the life & contributions of Benjamin Franklin; learn about personal finance.

**Second Grade AKS**

**LA: Reading**-Identify & infer the main idea; provide details of a story; identify the cause & effect; recognize the author's purpose to inform; determine the meaning based on context; use the glossary, index, guide words, & appendix correctly when using a dictionary or thesaurus.

**Writing**-When writing an informational piece, use traditional organizational patterns to convey your information.

**MATH**-Evaluate basic & compound shapes; describe & classify 2D & 3D figures by vertices, edges, & angles; recognize the "faces" of geometric solids; identify right, obtuse, & acute angles.

**SCIENCE**-Describe the universe to include the moon, sun, other stars, & planets; describe physical attributes of stars; identify gravity as the force that pulls objects towards the center of the earth.

**Third Grade AKS**

**LA: Reading**-Identify that an author's purpose may be to entertain the reader; read 120 words per minute correctly.

**Writing**-Focus will be on imaginative writing (poetry); identify formal & informal language exchanges (e.g., slang, colloquialisms, & idioms) appropriately.

**MATH**-Represent area, model area by tiling, determine area, explain & apply formulas for perimeter/area; use mental math & estimation to add, subtract, multiply, & divide.

**SCIENCE**-Investigate magnets & their effect on common objects & other magnets; investigate to find common objects that are attracted to magnets; investigate how magnets attract & repel each other.

**SOCIAL STUDIES**-Discuss the life of Lyndon B. Johnson & his efforts to expand people's rights & freedoms; describe the cultural & geographic systems associated with Lyndon B. Johnson; describe how Lyndon B. Johnson displayed positive character traits.

**Fourth Grade AKS**

**LA: Reading**-Focus on poetry, use of imagery, sensory language, simile, rhythm, and meter; recognize & explain idioms & figurative phrases, demonstrate how to summarize & paraphrase; describe plagiarism & understand why it is wrong.

**Writing**-Identify the speaker of a poem or story.

**MATH**-Recognize plane figures; identify & compare quadrilaterals; measure angles & rotations; identify solid figures.

**SCIENCE**-Identify & describe various ecosystems, food chains, & food webs; describe how adaptation is necessary for survival; describe why & how some species have become extinct.

**SOCIAL STUDIES**-Explain & describe America's move west-known as the Westward Expansion; Examine abolitionist & suffrage movements.

**Fifth Grade AKS**

**LA: Reading**- Analyze the structural elements of dramatic literature; Develop reference & study skills, including using organizational features of texts.

**Writing**-Demonstrate basic keyboarding skills; create simple documents by using electronic media; create a response to literature that is interpretive, evaluative, or reflective; support judgments through references to text or to references.

**MATH**-Identify & analyze congruence of figures; analyze & explain the relationship of circumference, diameter, radius, & pi; maintain fact fluency & measurement skills.

**SCIENCE**-Investigate electricity & magnetism & their relationship to one another; investigate current & static electricity.

**SOCIAL STUDIES**-Cite reasons for the American entry into World War II; locate important places associated with World War II; discuss the origins & consequences of the Cold War.

## Marlene Taylor-Crawford, Counselor

### Attendance Law, Policies, and Procedures

- ✦ School attendance is important because it underscores the significance of learning and the importance of obtaining an education.
- ✦ School attendance helps students develop good work habits that will carry over in life.
- ✦ There is a strong relationship with good attendance and improved grades.

#### **The responsibility of fostering good attendance starts with parents.**

The Gwinnett County Public School Student Attendance Protocol is in full compliance with provisions of **HBI 190**.

#### **Key Provisions of HBI 190:**

- Inform parents and students of policies, procedures, definitions, and possible consequences of chronic absenteeism & truancy.
- Notify parents when students have accumulated five (5) unexcused absences. Notify students 14 years old and over when they accumulate seven (7) unexcused absences that ten (10) unexcused absences will result in DOE being notified and driver licenses/permits being suspended by DMV.

#### **Definitions:**

**Truant-** Any child subject to compulsory attendance who during the school calendar year has more than five days of unexcused absences

**Excused Absences-** State Board Of Education Rule 160-5-1-.10 defines the following as excused absences:

Personal illness or attendance in school endangers a student's health or the health of others.

A serious illness or death in the student's immediate family necessitating absence from school.

A court order by a government agency, including before induction physical examinations for service in the armed forces.

Observing religious holidays, necessitating absence from school.

Conditions rendering attendance impossible or hazardous to student health and safety. For Gwinnett County Public Schools, the closure of schools for hazardous conditions may only be made by the Superintendent for the purposes of excused absences.

A period not to exceed one day is allowed at the discretion of the local unit of administration for registering to vote or voting in a public election (applies to students who are eligible to vote).

Local boards of education shall count students present when they are serving as pages for the Georgia General Assembly.

Public school students whose parent or guardian is in military service and who is being sent overseas for active duty or returning from active duty are allowed five excused absences per school year, for the day or days missed from school to visit with his or her parent or legal guardian prior to such deployment or during leave.

#### **Examples of Reasons that are Unexcused Absences or Tardies**

Missed the school bus

Overslept

No transportation to get to school (student can take bus)

Stayed home to babysit a younger sibling

Escorted a parent to translate

Vacation days during scheduled school days

Student complaining that they do not want to come to school. Please discuss concerns with teacher and or school counselor.

#### **Parent Attendance Responsibility:**

The school receptionist will call daily the parent of every student who is absent for the day- Please contact the school in advance if you know that your child will be absent **and** send in a signed and dated written note when the student returns to school explaining the reason for absence. Send in a medical note if student was seen by a medical professional such as a doctor, dentist, or therapist. If the parent does not send a note to school, the absence will be regarded as unexcused until a note is received within a reasonable time. When a student reaches **5 unexcused absences**, a letter will be mailed home from the county informing the parent that the student will be considered truant and a listing of possible consequences is outlined in the letter. Also, the parent will receive a phone call from the school counselor, and a meeting may be scheduled to discuss attendance. Students who are tardy must enter the school with a parent to sign them in.

If you have any questions or concerns regarding the attendance law or policies and procedures, please contact Ms. Taylor-Crawford @ 770-736-4430. This information is also available in the student handbook.

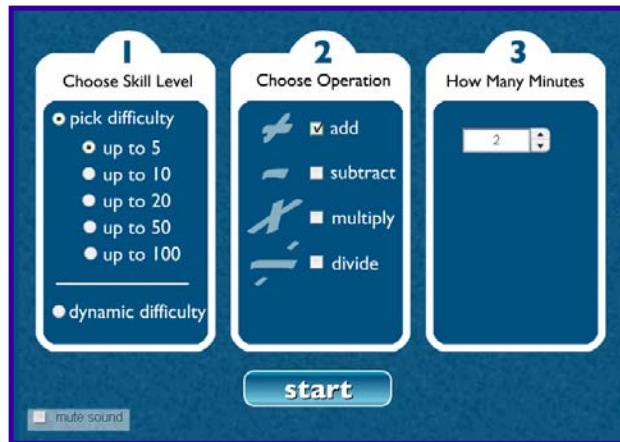
**Looking for a great basic facts website to use with your child?  
Wondering what you can do at home to help your child in math?**

Check this out: <http://www.playkidsgames.com/games/mathfact/mathFact.htm>

It's been added to our Learning Links page.

NCTM Illuminations - Resources for Teaching Math	School Time Math Activities
Visual Fractions	Basic Facts Practice by Play Kids

1. It is **FREE** ! Your child will want to do this at home.
2. Select your options. (See screen shot below)



3. Begin by selecting the “up to 5 addition” option first to see how your child does. Keep the session time consistent at 2 minutes. This will give you a good barometer for how your child is doing. You can choose more than one option to mix & match. You can also let the computer pick it by choosing the “dynamic difficulty” option. This is a great way to isolate areas that your child needs help in.

4. At the end of the session, your child will receive a report that looks like this, indicating how he/she did. If your child has a mixed session, the report will indicate that as well. It is not cumulative. Once your child selects “start over”, it starts over from scratch. Children love trying to beat their last score each time!

Summary						
Total Time : 2.0 minutes		Level : up to 5				
Average answer time : 1.1 sec		Operations : add				
Number answered : 72						
number skipped : 0						
Average Time to Answer Each Problem By Level and Operator In Seconds	Level	5	10	20	50	100
	+	1.1				
	-					
	x					
	÷					

**Coaches' Corner: Mr. McNeill- Science Specials & Coach****Sometimes Science Isn't Just "Doing"...It's also "Reading"**

I love Science! And I'm fairly certain that every student here at Britt knows this. I look for connections between what we study and what we experience in our daily lives. When students come to Science Specials, I try to teach the curriculum via hands-on experiments and activities. I not only want the students to understand the material and concepts but enjoy the subject matter as well. At the end of a long day, as students board buses, I am sometimes rewarded with the words, "That was cool what we did in science today!"

At the beginning of each year, I ask the students what science means to them. Doing experiments, mixing chemicals, and blowing things up are usually the most common responses. In addition, kids know from TV shows and movies that science labs are where great discoveries happen. But is this all? Isn't there more to it? Well, yes there is!

When kids ask me, "How do you know all this stuff?" I usually answer with two words: "**I read!**" Simply put, for all the cool labs and activities that are out there waiting to be done, most learning still comes from reading. I read textbooks, magazines, newspapers, and websites to obtain information. Nonfiction books provide a wealth of information; many, many chapter books and novels weave scientific content throughout their pages. In fact, Science Fiction is a genre in its own right! *Jurassic Park* is one of my favorite books of all time, and I love telling students that if they liked the movie, then they'll one day love the book!

Not only is reading an essential part of learning about what has been done in the past, it is a critical component of obtaining new information such as during lab activities. Instructions and procedures cannot be followed if students can't or aren't willing to read. A much richer and rewarding experience awaits those who pay close attention and follow the written directions.

I encourage students to read all they can, especially if they are interested in a particular topic. Parents can help support their children by helping them select books and articles that are interesting but also are reading-level appropriate. One great advantage to non-fiction text is that it doesn't have to be long to be informative. This is especially beneficial to those who have a hard time reading for great lengths of time. Extensive information can be obtained from just a few paragraphs. The more exposure students have to nonfiction, the better able they will be at reading their textbooks and standardized test questions in the future.

Using Title I money, our school has just purchased hundreds of new non-fiction books based on science themes. Each of these books was recommended by Gwinnett County science teachers because they closely aligned with our curriculum. These books not only offer lots of information, but they do so with flare! I've enjoyed browsing through the collection, and I can't wait to read these in class as well as on the couch.

**Radio Disney Comes to Britt!**

On Friday, Feb. 26, [Radio Disney](#) visited Britt Elementary to present "Move It!" for Kindergarten, First, & Second Grade students. "Move It!" is Radio Disney's youth fitness program that encourages an active lifestyle for kids. The program is a Disney style 30 minute "edu-tainment" program showcasing the theme, "get off your seat and on your feet," where Radio Disney incorporates "active-ities". "Move It!" is sponsored by Georgia Egg Commission & Georgia Families.



## When Are the Next Parent Workshops?

Mark Your Calendars Now!

### **Getting Ready for Kindergarten**

(Registration information for families with children who will start Kindergarten in the Fall )

**Thursday, March 30 at 6:15 p.m.**

### **Family Literacy Night with Eric Litwin**

**Thursday, March 30 at 7 p.m.**

Bring your children and come enjoy an evening filled with fun with Eric Litwin, author of *Pete the Cat*.

To RSVP for these workshops, visit [www.wcbritt.org](http://www.wcbritt.org) and select "Parent Workshops" under the Title I Tab, or call Kathy Jackson at 678-639-3884 to reserve your spot. FREE childcare is available.

## Snellville Day Parade & Float—Britt Needs Your Help!



Britt would very much like to participate in the Snellville Day Parade on Saturday, May 1st. We would like to enter a float in the contest, but need parent volunteers to be on the Float Committee and/or to donate materials. Celia Georgie-Doughty has agreed to be the Chairperson to oversee this project. The design for the float has already been drawn. This year's Snellville Day Parade theme is: "Community First." If we are going to participate, Celia needs to hear from you soon. Our application and sketch of the float must be submitted by April 19, 2010. There is a first place cash prize of \$600.00 which would go towards purchasing instructional materials at Britt Elementary. There is no fee to participate.

If you are interested in volunteering to work on the float, or if you have materials you can donate, please contact **Celia at 770-736-8817 by Friday, April 12th**. Without additional volunteers, we won't be able to participate.

### **Can you donate any of the following materials?**

- \*Flat bed for the float
- \*Paint, glitter, glue, stapler, & staples
- \*Foam Board to make cut-outs of children
- \*Plywood to make a huge Comet & Britt's Logo
- \*\$5.00 or \$10.00 gift certificates to Hobby Lobby
- \*Large cardboard to make columns & shooting stars
- \*Blue plastic table clothes to cover the flatbed and make fringe

**To make a donation, please call Celia Georgie-Doughty at 770-736-8817**

## South Gwinnett Cluster Foundation's Dinner-Auction Fundraiser



### South Gwinnett Cluster Foundation

#### 2<sup>nd</sup> Annual Dinner-Auction Fundraiser

Summit Chase Country Club

Saturday-**March 20th**- 7:00pm

Silent and Live Auction

Dress: Business Casual (No Jeans)

Tickets \$20.00

*Your ticket will also be entered into a drawing for \$100.00.*

We are very excited about our 2<sup>nd</sup> annual fundraising event at Summit Chase Country Club and hope that you will be able to attend this fun filled evening. The \$20.00 ticket includes the following fabulous menu:

*Carved Roast Beef, Martini Mashed Potato Bar, Meatballs in Sour Cream Sauce, Sesame Teriyaki Chicken Tenders, Roasted Vegetable Pasta Salad and a scrumptious Caesar Salad, Tea, and Water.*

The evening's activities will include a live and silent auction with items from the following categories:

<b>Travel/Getaways:</b>	Stone Mtn. Getaway includes two nights at the Marriott Evergreen, golf, and all day passes.
<b>Sports &amp; Recreation:</b>	Signed footballs, sports memorabilia, bowling, boxed lunch with Captain Herb Emory and Mark Arum and a behind the scenes tour at WSB radio and television, Gold's Gym, Yellow River Game Ranch, Sunset Sail with Lanier Sailing Academy, and Aurora Theatre tickets.
<b>Dining:</b>	Dine Around Snellville Area Basket and Dine Around the Avenue Basket.
<b>Education:</b>	Introductory Flying Lesson, Large Student Graduation Banner, 2- New London Driving Courses and 2 Collision Courses.

#### **Mission Statement-**

The South Gwinnett Cluster Foundation's mission is to establish partnerships with our schools, residents, and business communities to promote the academic enrichment, growth and success of the students within the South Gwinnett Cluster.

The foundation is working hard to fulfill vital needs for the six schools that comprise the South Gwinnett Cluster (South Gwinnett High School, Snellville Middle School, Britt Elementary, Norton Elementary, Magill Elementary and Rosebud Elementary). Our goal is to provide funding for scholarships, educational grants, mentoring programs, academic support materials, extra-curricular needs, school safety programs, and immediate needs for which public funds may not be available in a timely manner.

We hope you are able to set aside the time to join and support our 2<sup>nd</sup> Annual Auction fundraising event. Check website for auction item update.

Please contact [Kathy\\_Stewart@gwinnett.k12.ga.us](mailto:Kathy_Stewart@gwinnett.k12.ga.us) or call 770.530.5824 for tickets. You can pay by cash or check (make it out to SGCF). Please be sure to write your child's name and teacher's name on the envelope.

South Gwinnett Cluster Foundation Members [www.southgwinnettcluster.org](http://www.southgwinnettcluster.org)

## News from the Comet Café

**National School Breakfast Week is March 8 – 12.** (School is out on Friday the 12<sup>th</sup>)

All students who join us for breakfast on Tuesday March 9, Wednesday March 10 and Thursday March 11, will be entered in a school drawing to win a \$50 Best Buy Gift Card! The winner will be entered in a drawing for the whole county to win a lap top computer! We are shooting for 100% participation. The class that has the highest percent of participation for the week will win a PIZZA PARTY SNACK. (The pizza will be brought in from our local MELLOW MUSHROOM!!!) We will bring it to your class one afternoon, scheduled with your teacher! Join in the fun! Who knows what else will be given away to participants?!

So gear up for **Breakfast, the Most Important Meal of the Day!**

The cost for breakfast is \$1.00 full pay, \$.30 for reduced, and free for free!

Special menu for the week:

Tuesday, March 9 - On Your Mark Muffins (assorted flavors)

Wednesday, March 10 – Get Set Raspberry UBR Bar and a Yogurt Crush Cup

Thursday, March 11 – Go Mini Chicken Biscuits with a Get Up and Go-Gurt

(Other options off our regular menu will also be offered these days)

Fantastic flatbreads are a great way to cut some calories and fat! Thin and slightly chewy flatbread is a nice alternative to pizza. Eat it any time of day with these recipes.

### Sweet breakfast

Warm a small flatbread in a toaster oven, and top with 2 tbsp. peanut or sunflower butter (We taste tested this item, and it got a thumbs up from students!), one sliced banana, and a little maple syrup.

### Chickpea snack

Mash chickpeas (15 oz. can, drained and rinsed), and stir in 1/8 tsp. each of cumin and coriander. Spread on an unheated flatbread.

### Chicken dinner

Put strips of cooked, boneless chicken breast on a flatbread. Top with diced tomatoes and shredded skim mozzarella cheese. Broil until the cheese melts.

Note: You can buy fresh or frozen flatbread at the grocery store. Or make your own: Mix 3 cups whole-wheat flour, 1 1/2 cups water, 1 tbsp. olive oil, and 1/4 tsp. salt. Roll dough into a ball, and flatten on a cookie sheet. Bake at 350° for 20 minutes.

Q: What's the best thing to put in soup? A: A spoon!

## Spring Carnival: Saturday, April 24

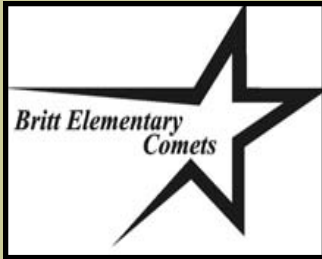


**Britt's PTA Spring Carnival**  
**Saturday, April 24th**  
**2 pm—6 pm**



Come join us at our Spring Carnival! There will be jumpers, carnival games, and a DJ! Fun activities for all ages. Look for more information regarding ticket prices and other attractions in the April edition of the *Comet Connection*. We will need volunteers to supervise the jumpers and carnival games.

Contact **Alicia Carey** at [careyalicia23@yahoo.com](mailto:careyalicia23@yahoo.com) if you are interested in volunteering.



W. C. Britt Elementary  
2503 Skyland Drive  
Snellville, GA 30078

770-972-4500  
Fax: 770-736-4426  
www.wcbritt.org

**School Administration:**

**Doris Jones**  
Principal

**Sandy Grizzard**  
Assistant Principal

**Russ LaPlume**  
Assistant Principal

**Melissa Madsen**  
Assistant Principal

**The Comet Connection Newsletter**

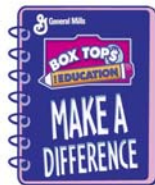
The Comet Connection is a publication of  
W. C. Britt Elementary School for  
Britt families.

Please e-mail questions or comments to the  
Editor,  
Kathy Jackson at  
kathy\_jackson@  
gwinnett.k12.ga.us

**2009-2010 PTA Officers**

Alicia Carey	Co – President	<a href="mailto:careyalicia23@yahoo.com">careyalicia23@yahoo.com</a>
Jocelyn Touray	Co – President	<a href="mailto:tourayjo@comcast.net">tourayjo@comcast.net</a>
Miriam Johnson	Vice – President	<a href="mailto:miriamajohnson@bellsouth.net">miriamajohnson@bellsouth.net</a>
Janice Joseph	Vice President	<a href="mailto:janicejoseph98@aol.com">janicejoseph98@aol.com</a>
Yashica Weeks	Treasurer	<a href="mailto:yweeks1@comcast.net">yweeks1@comcast.net</a>
Maureen Lawson	Secretary	<a href="mailto:moelaws@hotmail.com">moelaws@hotmail.com</a>

**Box Top Power!**



**Remember,  
Box Tops for BrainPOP!!!**

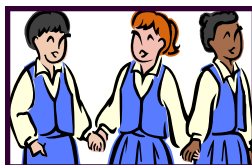
Reach the ultimate challenge of raising \$2,000.00 and pies will fly on Field Day in May. That's right, meet this challenge and students will throw pies at Britt's fun-loving staff of Principals!

**Britt's Reader's Rally Team**



The Reader's Rally team from Britt Elementary won 1st place in their division at the 5th Annual Reader's Rally Competition at Berkmar High School on February 20, 2010. The 2010 team members are Parker Goff, Billi Joseph, Troy Tappin, Kaitlyn Lawson, Fabiola Vazquez, Katherine Czarick, Nahom Eskendir, Alexis Lewis, Derrick Williams & Jazmine Antoine. These students read books from a list of 20 titles and answered questions about the books. They competed against students from other Gwinnett County schools. Mrs. Chapman, Britt's media specialist, was the team coach who lead the team to achieve the title of Division 8 Champions!! **Congratulations on a job well done!**

**SGHS Chorus Performs for Britt Students**



On Friday, February 19th, third, fourth, and fifth graders enjoyed a performance by the South Gwinnett High School Chorus. The program was in honor of Black History Month. Administrators, teachers, and students walked over to South Gwinnett's Theater for the concert. What an amazing selection of music and talent! Many thanks to the Chorus members at South Gwinnett High School and to their Chorus Director.